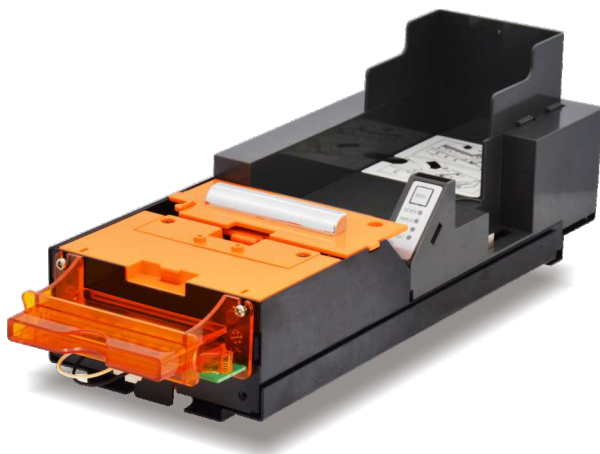




www.ictgroup.com.tw

FORTUNE

Gaming Printer



Installation Guide

International Currency Technologies Corp.

Use of Materials Limitations

International Currency Technologies Corporation (ICT) all rights reserved.

All materials contained are the copyrighted property of ICT.

All trademarks, service marks, and trade names are proprietary to ICT.

ICT reserves the right at all times to disclose or to modify any information as ICT deems necessary to satisfy any applicable law, regulation, legal process or governmental request, or to edit, refuse to post or to remove any information or materials, in whole or in part, in ICT's sole discretion.

Contents

1. Introduction	
1-1. Overview.....	2
1-2. Features.....	2
2. Specifications.....	2
3. Dimension	
3-1. Fortune.....	4
3-2. Ticket.....	5
3-2-1. Logo Information.....	6
4. Installation	
4-1. Harness Application.....	7
4-2. I/O Circuits.....	8
4-3. DIP Switch Setting.....	10
4-4. Download.....	11
4-5. How to place the ticket.....	14
5. Maintenance.....	15
6. Troubleshooting.....	16

1. Introduction

1-1. Overview

The Fortune is a brand new gaming printer that fits the Ticket In and Ticket Out (TITO) system perfectly, and has the ability to connect to the slot machine and print tickets for players in real time. In addition to the game port (RS232), a separate USB port is provided for convenient firmware upgrades.

1-2. Features

- Reliable, durable, easy maintenance.
- High-speed, superior printing quality.
- Hot swappable.

2. Specifications

General

Interface	RS232 (ICT Protocol)
Printing Method	Direct Thermal
Printing Speed	Up to 120±5 mm/s (Depend on content)
Resolution	8 dots/mm (203 dpi)
Fonts	3 (8.5 cpi, 12.7 cpi, 25.4 cpi)

Barcodes	Interleaved 2 of 5
Paper Size	Length: 156±1 mm Width: 65±1 mm Thickness: 0.1mm
Ticket Material	Thermal Paper
Ticket Weight	102g/m ²

Electrical

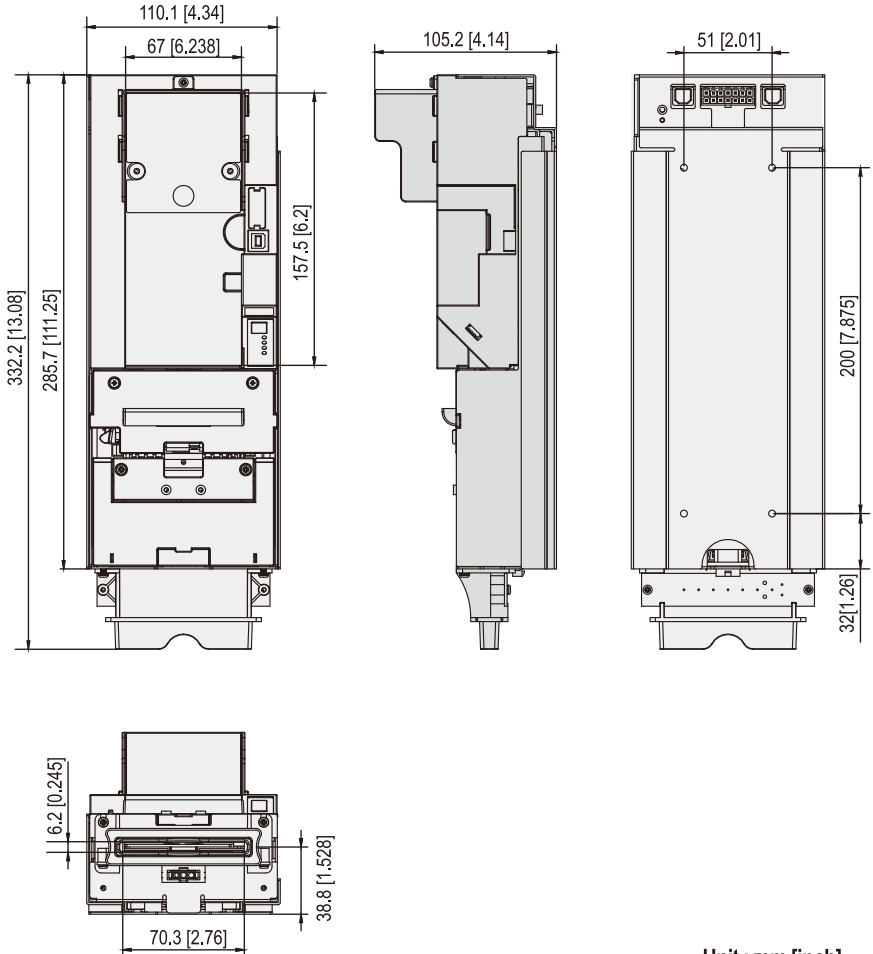
Power Source	24V DC (±10%)
Power Consumption	Standby: 0.2A, 4.8W Operation: 3.5A, 84W Maximum: 4.5A, 108W
Operation Environment	Operation Temperature: 0°~ +50°C Storage Temperature: -20°~ +60°C Humidity: 10~50% RH (no condensation)

Mechanical

Capacity	200 Tickets / 400 Tickets
Weight	Approx. 1.5 kg
Recommended Applications	Indoor Gaming

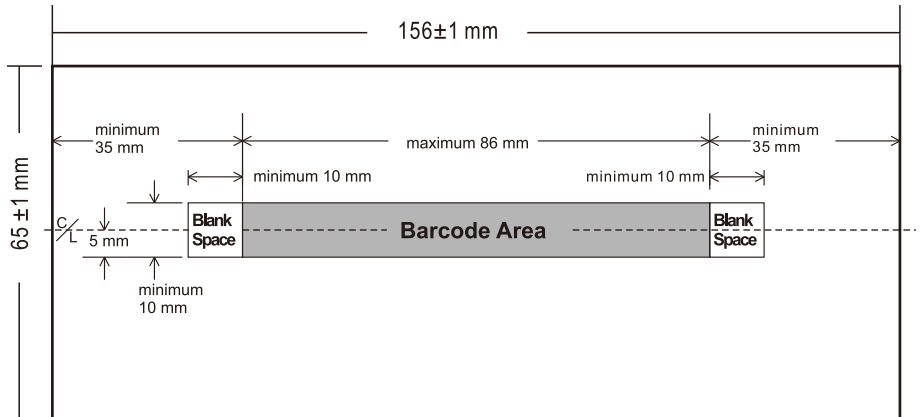
3. Dimension

3-1. Fortune



Unit : mm [inch]

3-2. Ticket

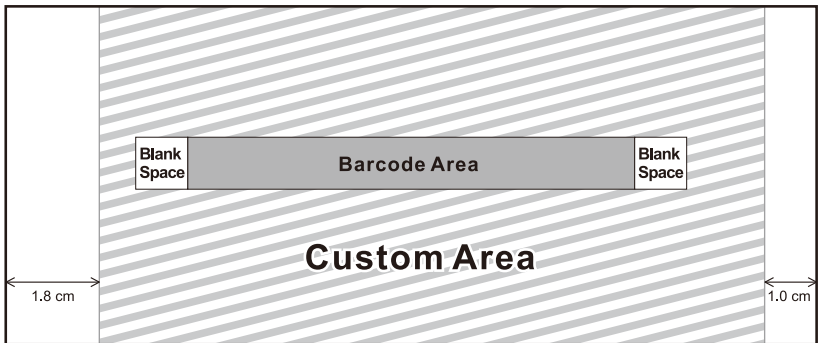


3-2-1. Logo Information

Logo Format: bmp, jpg

Location: Custom Area

3-2-1 FIG.01

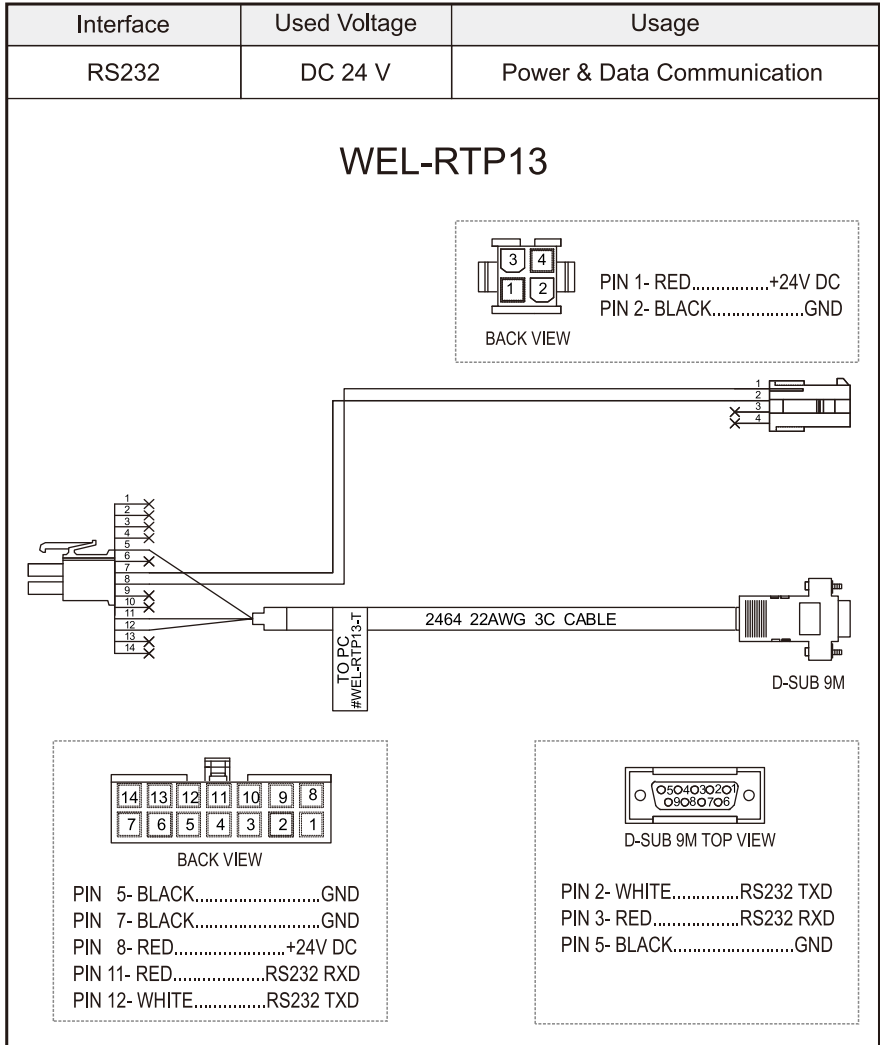


3-2-1 FIG.01-1



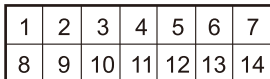
4-1. Harness Application

4-1 FIG.01



4-2. I/O Circuits

RS232 Communications Interface PCB



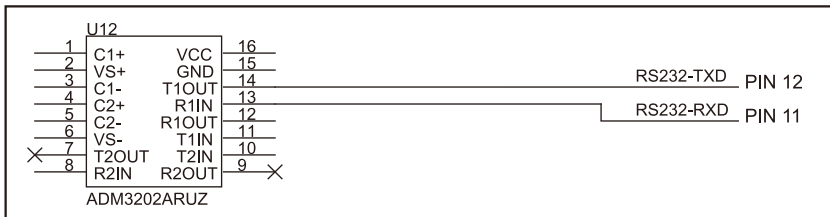
4-2 FIG.01

The RS232 interface connector is a 14 position Molex Minifit JrR., part number 39-30-1140, which mates with Molex part number 39-01-2140 or equivalent.

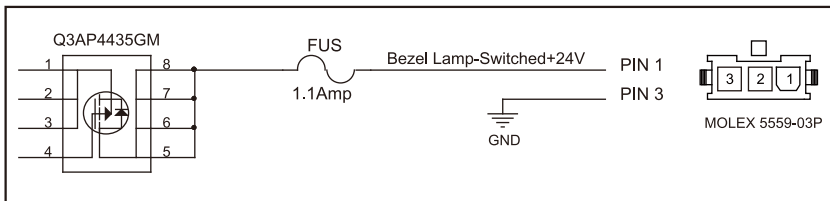
PIN	FUNCTION	I/O	PIN	FUNCTION	I/O
1	Not Connected	-	8	+24V DC	I
2	Not Connected	-	9	Bezel Lamp- Switched +24V DC	O
3	Not Connected	-	10	GND	-
4	Not Connected	-	11	RS232 RXD	I
5	GND	I	12	RS232 TXD	O
6	+24V DC	I	13	Not Connected	-
7	GND	I	14	Not Connected	-

4-2 TABLE 01

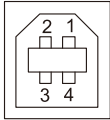
4-2 FIG.02



4-2 FIG.03



USB Communications Interface PCB



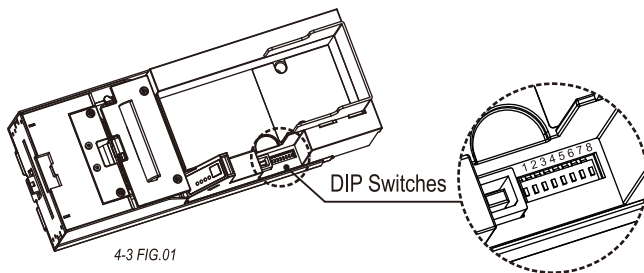
4-2 FIG.04

The USB Communications PCB contains two connectors. Power- 4 position Molex Minifit JrR., part number 39-30-1040, which mates with Molex part number 39-01-2040 or equivalent USB Communications - Type B USB connector.

PIN	FUNCTION	I/O
1	VBUS	-
2	D-	I/O
3	D+	I/O
4	GND	-

4-2 TABLE 02

4-3. DIP Switch Setting



4-3 FIG.01

4-3 TABLE 01

SW	OFF	ON
SW1	Unable Detect Printing Barcode	*Able Detect Printing Barcode.
SW2	Inventory Level Low-OFF	* Inventory Level Low-ON
SW3	Ticket Jam detection - OFF	* Ticket Jam detection - ON
Note1 SW4	* Normal Mode	Testing Mode.
SW5	* Unable Press Feedkey 5sec to upgrade software by USB	Note2 Able Press Feedkey 5sec to upgrade software by USB.
SW6	* Reserved	Reserved
SW7	* Reserved	Reserved
SW8	* Reserved	Reserved

Notes: * means factory setting

Notes 1: In normal mode, the self-testing will be printed after pressing FeedKey.

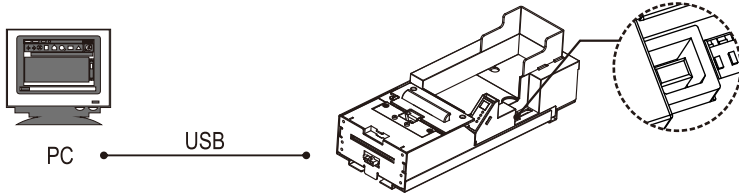
In testing mode, the default Demo Barcode will be printed after pressing FeedKey.

Notes 2: SW5 Reset function can be used while the machine is not printing.

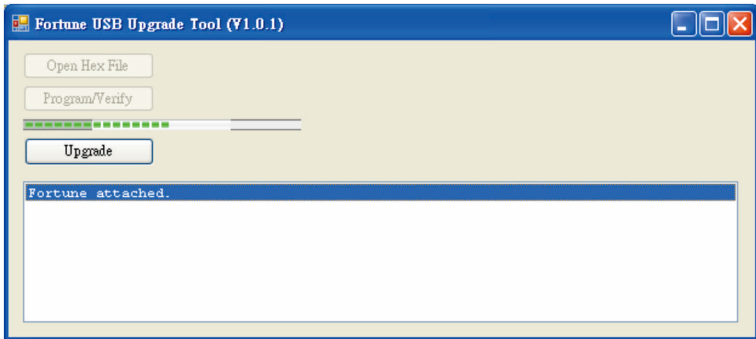
In case of Ticket Burst, the machine needs to be rebooted.

4-4. Download

1. Connect Fortune to PC USB, and turn on the machine.

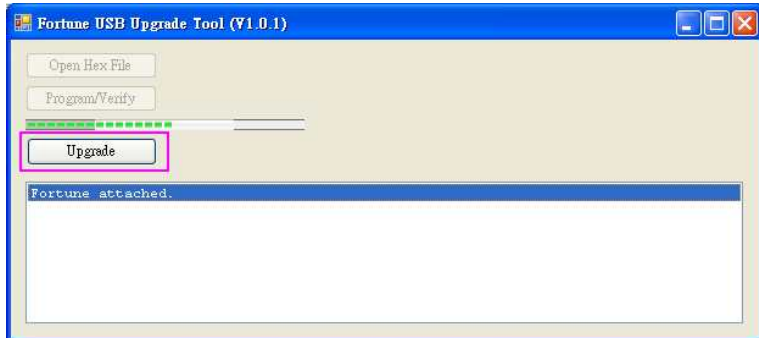


2. Start the Fortune USB Upgrade Tool.
The following screen shows the USB has successfully connected.



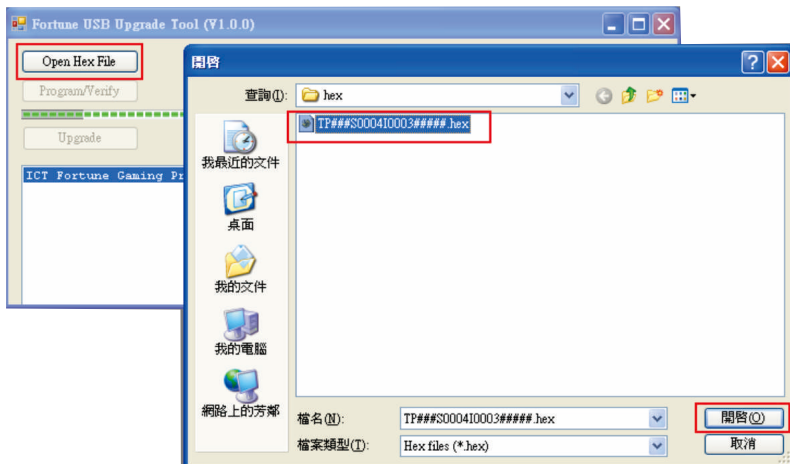
4-4 FIG.01

3. Press the “Upgrade” button.



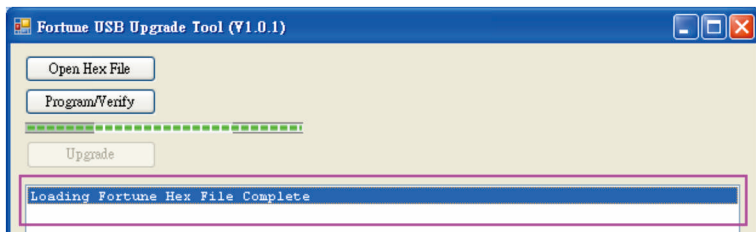
4-4 FIG.02

4. Please select the desired file to upgrade.



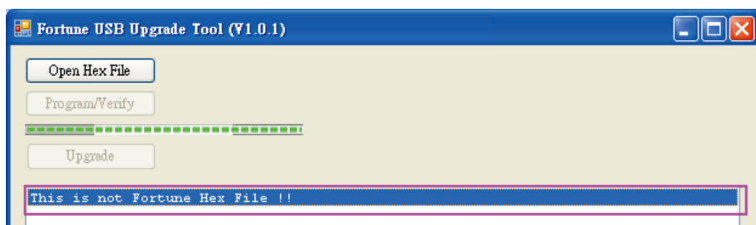
4-4 FIG.03

(A).The upgrade will begin after select the right file.



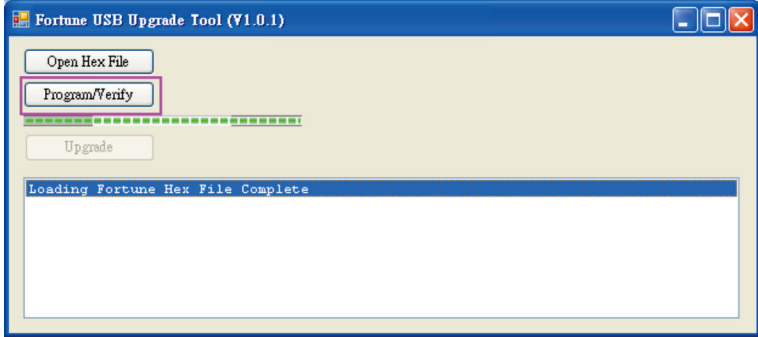
4-4 FIG.04

(B).The following screen shows the wrong file is selected.



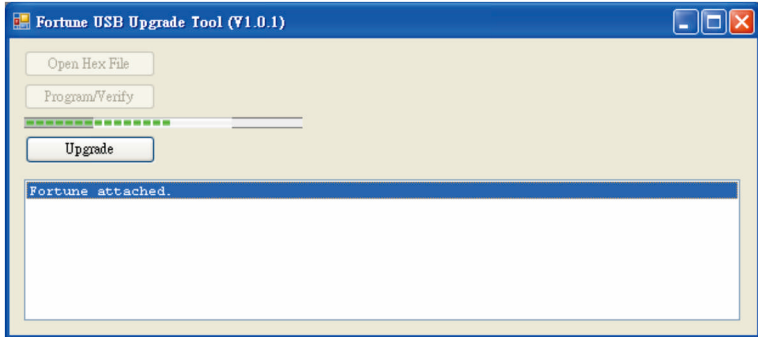
4-4 FIG.05

5. Press “Program/Verify” button, the upgrade will begin.




4-4 FIG.06

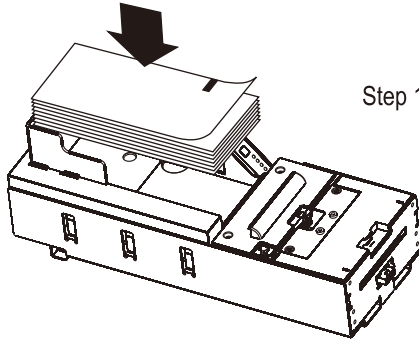
6. The upgrade completed.



4-4 FIG.07

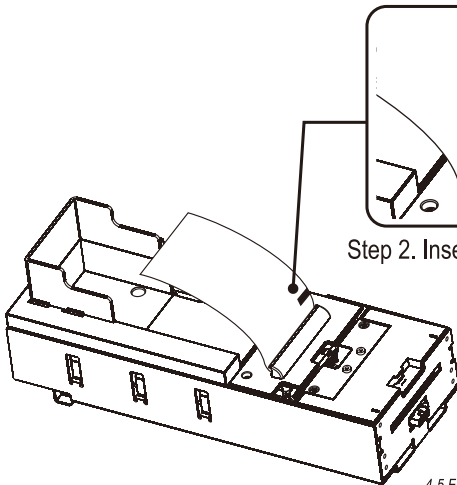
 The screens shown above may not be the latest version. Please follow the latest software releases.

4-5. How to place the ticket



Step 1. Load the new ticket stacks.

4-5 FIG.01

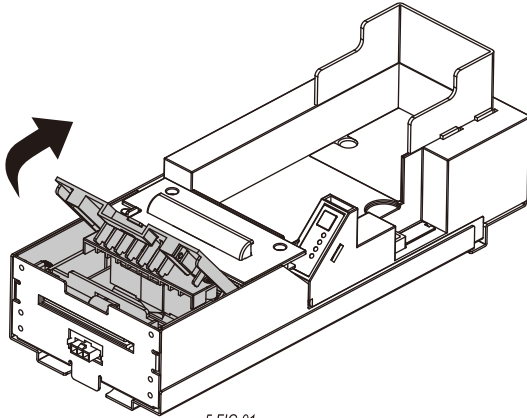


Step 2. Insert the first ticket into the printer.


4-5 FIG.02

5. Maintenance

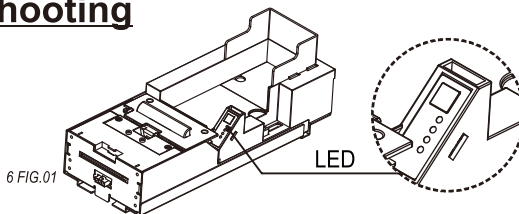
Open the cover, and use soft brush or low-pressure air to clean the dirt or foreign objects.



5 FIG.01

	<p>Maintenance Notice <i>(Any improper maintenance will result invalid warranty.)</i></p>	
	Recommended	Mild, non-abrasive, soap water.
	DO NOT USE	Organic solvent , Alcohol, Volatile liquid.

6. Troubleshooting



6 TABLE 01

FLASHES				ERRORS	CORRECTIVE ACTIONS
Ready	Paper	Open	Fault	Status	
ON	X	ON	X	Cover Open	Please open the upper cover.
ON	X	BLINK	X	Chassis Open	Please close the chassis.
ON	ON	X	X	Ticket Out	Take out and reload the ticket.
ON	BLINK (2)	X	X	Without Ticket	Please put the ticket.
ON	BLINK (1)	X	X	Ticket Low	Low tickets prompts, replace with new tickets if necessary.
ON	X	X	BLINK	Ticket Burst	Printing problem. Please check if there is damage on the printing head. If damaged, please replace a new printing head.
BLINK	X	X	BLINK	Ticket Jam	Please open the upper cover and take out the ticket.
BLINK	X	BLINK	X	Thermal Roller Detached	Please re-attach the thermal roller and hook back to the original position.
BLINK	BLINK	BLINK	BLINK	Checksum Error	Please check the correctness of the program, and re-download the program.

Note 1: X means not available.

Note 2: Ticket Burst, need to restart the machine

Note 3: Ticket Jam. Please open the upper cover and take out the tickets, then close the cover.

Note 4: Thermal Roller Detached. Need to re-load the ticket after re-attached the thermal roller.

Note 5: Flashes two times in one second.

Note 6: Flashes one times in one second.

Note 7: If there are two or more statuses on the above table, the flashes will show them all.

Ex. Chassis Open and Ticket Low, the LED status is as follows:

LED	Ready	Paper	Open	Fault
STATUS	ON	BLINK	BLINK	OFF



If the error can not be solved after corrective actions or happens again, please contact ICT or agents for technical support.

ict Taiwan

International Currency Technologies Corporation

No.28, Ln. 15, Sec. 6, Minguan E. Rd., Neihu Dist., Taipei City 114, Taiwan

sales@ictgroup.com.tw (For Sales)

fae@ictgroup.com.tw (For Customer Service)

Website: www.ictgroup.com.tw

